



Worldwide Discovery

Philosophy and Process

Baillie Gifford™

This document is solely for the use of professional investors and UK intermediaries and should not be relied upon by any other person. It is not intended for use by retail clients.

Important information

Potential for profit and loss

All investment strategies have the potential for profit and loss, your or your clients' capital may be at risk.

This communication contains information on investments which does not constitute independent research. Accordingly, it is not subject to the protections afforded to independent research, but is classified as advertising under Art 68 of the Financial Services Act ('FinSA') and Baillie Gifford and its staff may have dealt in the investments concerned.

All information is sourced from Baillie Gifford & Co and is current unless otherwise stated.

The images used in this communication are for illustrative purposes only.

Contents

Baillie Gifford	4
Investment philosophy	6
Investment process	6
Idea generation and portfolio construction	7
Risk controls	8
Biographies	9

Baillie Gifford

Since 1908, when Baillie Gifford was founded as an investment partnership, the firm has been wholly owned by the people who look after and invest for our clients.



Through each successive generation of partners our single focus on generating superior, long-term investment results for our clients has been the bedrock of our growth.

Partnership defines us

The absence of external shareholders allows us to put our clients' needs first. It brings stability and a long-term time frame to everything we do in our business, whether choosing the best investments for our clients' portfolios or continually investing in the firm and developing our people.

Our partnership structure brings freedom from short-term pressures, allowing us to be truly active investors. Portfolios are shaped by where the best investment opportunities lie, rather than where the index dictates. We encourage a strong culture of inquisitiveness, debate and respectful trust in which our investors are nurtured and thrive.

Our investment approach

Curious about the world

The best investment ideas spring from analysis of future possibilities, not short-term probabilities. Our research covers the globe. We set no barriers to the scope of our research, encouraging fresh perspectives and the use of diverse sources of information.

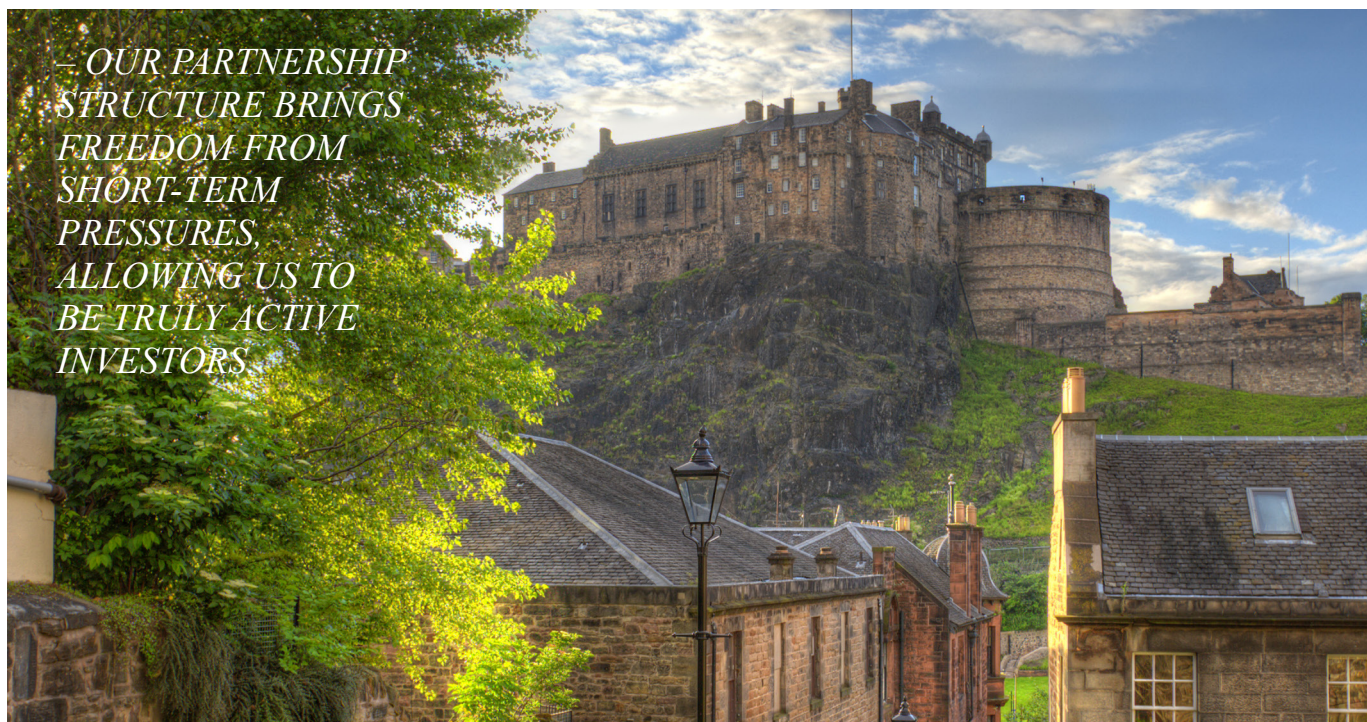
Fundamentally driven

The world is complex. We believe that the way to generate long-term returns for our clients is to focus on identifying and investing in those companies which have the potential to grow at a faster rate, on a more sustainable basis, than the market believes.

We conduct rigorous qualitative research to establish whether prospective investments have the competitive, financial, and strategic advantage to deliver on that potential.

Collaborative research

We like to share. Investment ideas are discussed and debated across our investment teams, from those of the most junior analysts to partners of the firm. We are always looking for that novel insight, offbeat observation or penetrating challenge to enhance our collective understanding. There are no enduring right answers in investment, so we never stop asking questions.



*– OUR PARTNERSHIP
STRUCTURE BRINGS
FREEDOM FROM
SHORT-TERM
PRESSURES,
ALLOWING US TO
BE TRULY ACTIVE
INVESTORS*

Global perspective matters

Companies increasingly operate in a global environment – it is not sufficient to consider investment opportunities in isolation. We also need to understand their competitive positions and underlying attractiveness against their international peers. Having nearly all of Baillie Gifford's decision makers in one building enables us to easily share perspectives and debate issues – the constant flow of formal and informal investment discussions allowing us to draw together all the pockets of expertise that reside in our investment teams. We further ensure a global perspective by occasionally moving individuals between these teams: we value breadth of perspective and experience over narrow specialisation.

Clients come first

Baillie Gifford is solely an investment management company. We close our investment strategies to new clients before we gain too many assets to reasonably manage, and we keep our business simple so that we can focus on investment activities. Client relationships are handled by members of our highly experienced Clients Department, who oversee all aspects of delivering our services to clients, ensuring that investment managers are free to concentrate on investment issues.

Investment philosophy

At Baillie Gifford, we have enjoyed significant success over the last century by identifying and owning shares in growth companies; that is, companies which grow their profits at an above average rate over the long term. We have observed that some of the best growth opportunities are in smaller stocks: early stage businesses with the drive, energy and entrepreneurial spirit to transform their own fortunes. Worldwide Discovery is our way of capturing these opportunities.

The universe of smaller companies is vast – perhaps 50,000 globally – and exciting, because it may contain the winning companies of the future. Worldwide Discovery aims to produce superior long-term returns by investing in a portfolio of these smaller, immature companies with significant growth potential.

The opportunity for superior returns arises because:

- We routinely observe that **it is the less mature, more entrepreneurial companies that shape the evolution of an industry**. It is striking how little innovation originates directly from large businesses, and how often bigger corporations are bad at dealing with change. Size and market dominance often create a formidable barrier to competition, but the cultural baggage and management dislocation that inevitably builds can be a significant impediment to the necessary evolution of a business.
- Smaller companies are therefore interesting not because they are small, but rather because **the stage of development of their business can offer significant upside potential** with regards to profit growth and, ultimately, share price appreciation.

- **Bottom-up research is at its most valuable** when assessing immature businesses. The businesses are often simpler and yet it is typically during this early stage that the market's understanding of a company's growth potential is at its least developed.
- **Inefficiencies and valuation anomalies** are more common further down the market cap scale.
- **Our style of investment is well suited**, first, to identifying interesting businesses early in their development and, subsequently, backing them with a long-term investment horizon and ability to look through short-term volatility.

We focus our new idea generation on investment opportunities in companies with a market capitalization of \$10bn or below.

Investment process

Opportunity set

We estimate that there are roughly 15,000 smaller companies that are of sufficient size and liquidity for us to invest in.

We cannot cover all of these stocks, and indeed we have no desire to – Worldwide Discovery's performance will be driven by what it owns rather than what it does not. Instead, we focus our efforts on businesses which we believe will benefit from a combination of:

1. **a structural change in the company's market backdrop**, be it due to societal change, technological change, demographics or environmental issues/ imbalances (e.g. food, water, clean energy).
2. **the company's response to such change**, through innovation, the use of (sometimes disruptive) technology, or a new business model.

We quickly, qualitatively, screen out stocks that we do not believe exhibit both of these characteristics. This leaves us with a more manageable universe.

We consider approximately 150 stocks per year, which are more than sufficient potential investments for the ultimate portfolio of around 50–75 names.

Idea generation and portfolio construction

Idea generation/stock selection

At Baillie Gifford we are 'bottom-up' stock pickers, and our investment effort focuses on understanding the fundamental drivers of individual businesses' long term earnings trajectory. Company analysis is critical to this end and we concentrate on evaluating three key criteria.

- a) The size and scope of the growth opportunity that the company being considered may benefit from
- b) The tools the company has in its arsenal to exploit this opportunity. This focuses on product/service excellence, competitive edge and an assessment of management calibre and incentivisation
- c) The quantum of investment upside that we believe the company's equity offers, with consideration over the timeframe of achievement

We typically produce regular in-depth reports which focus on the above criteria and are subject to peer group review at a formal stock discussion. The purpose of this discussion is for the researcher to present the investment idea to the whole Worldwide Discovery Team, (see page 10 for team details). Team members are generalists and there are no geographical or sector constraints on what stocks the team can consider – we want our horizons to be as broad as possible.

Portfolio construction

Stocks under consideration for inclusion in the portfolio are discussed by the Worldwide Discovery Team. While Douglas Brodie, head of the team, is ultimately responsible for portfolio decision making, we actively encourage an environment that gives individual analysts a high degree of influence and, at the portfolio level, accommodates for tentative, individually higher risk stock ideas.

Once purchased, each holding's operational performance and valuation are continually monitored. In addition, the team conducts a regular collaborative portfolio review.

We believe that size is a fairly poor guide to immaturity. Consequently, we would expect some of the companies held to grow to \$10bn and beyond. Should this occur, we would not look to sell the holding on size reasons alone, instead preferring to sell based on our assessment of a company's fundamentals and valuation.

Portfolio structure

Worldwide Discovery holdings will, by their nature, offer a wide range of potential outcomes. We aim to embrace this uncertainty and believe it is important that the portfolio is:

- i) adequately diversified by name and thematic influence; and
- ii) sufficiently broad so as to be open to the inclusion of new ideas.

Hence, the portfolio consists of 50–75 stocks, with holding sizes typically 0.75%–3% at time of purchase determined purely by investment merit.

Risk controls

The type of stocks we want to own – early stage or with significantly changing business models – will be individually risky. We therefore seek to mitigate overall portfolio risk, which is the risk of permanently losing clients' capital, by focusing on portfolio diversification. This allows us to accept volatility in single stocks while attempting to limit it at the total portfolio level. The key controls are:

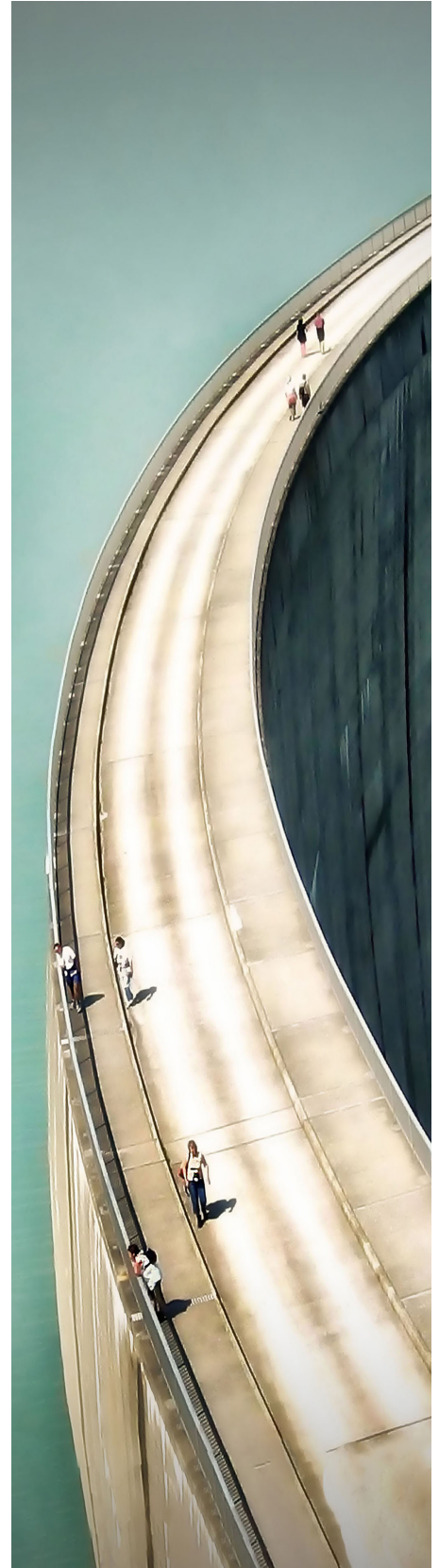
- we will hold 50–75 stocks;
- a minimum six countries will be represented at all times;
- a minimum number of 10 industries will be represented at all times;
- a minimum effective number of 25 holdings*.

Worldwide Discovery will likely exhibit greater shorter-term volatility than a typical equity portfolio (i.e. the annual standard deviation of returns will likely be higher than that of an 'all cap' global equity index).

*The effective number of holdings is a measure of diversification based on the number of holdings in an equally weighted portfolio that would have the same level of diversification. The effective number of assets in a portfolio is arrived at by squaring the weighting of each holding, adding them up and calculating the reciprocal number. For example, if we have a 100 stock equally weighted portfolio then the effective number of stocks is also 100. However, using the rules outlined above we can see that if one holding was 10% of the portfolio and the other 99 holdings were equally weighted, then the effective number of stocks would be 55. The effective number of industries represented is calculated using a similar methodology.

How should we be judged?

The aim of the strategy is to provide superior long-term returns. An appropriate benchmark may be the S&P Global Small Cap Index, MSCI All Country World Small Cap Index or the FTSE Global Small Cap Index, but comparisons with these indices are only expected to be meaningful over periods of at least five years.



Biographies



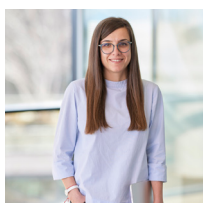
Douglas Brodie

Douglas joined Baillie Gifford in 2001 and became a partner in 2015. He is head of the Discovery Team and has led the strategy since its inception. He is also manager of the Edinburgh Worldwide Investment Trust. He graduated BSc in Molecular Biology and Biochemistry from the University of Durham in 1997 and attained a DPhil in Molecular Immunology from the University of Oxford in 2001.



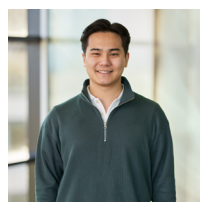
Ashley Lewis

Ashley is an investment analyst on the Discovery Team. She joined Baillie Gifford in 2021, and prior to joining the Discovery Team, she worked on the International Alpha Team. Prior to joining Baillie Gifford, she completed a PhD in Sociology from the University of Nottingham, with a focus on cooperative solutions in urban sustainability.



Svetlana Viteva

Svetlana joined Baillie Gifford in 2012. She is an investment manager in the Discovery Team. She is the lead manager for the US Discovery Strategy and a deputy manager for the Edinburgh Worldwide Investment Trust. She graduated BA in Economics and BA in Business Administration from the American University in Bulgaria in 2008, MSc in Investment Analysis in 2009 and PhD in Accounting and Finance in 2012, both from the University of Stirling. She is a CFA Charterholder.



Andrew Chang

Andrew is an investment analyst on the Discovery Team. He joined Baillie Gifford in 2023. Prior to joining the firm, he worked at Wellington Management in London. He previously obtained a combined honours degree in Economics, History, and Philosophy at Durham University.



Luke Ward

Luke joined Baillie Gifford in 2012. He is an investment manager in the Discovery Team and a deputy manager for the Edinburgh Worldwide Investment Trust. Luke is also an investment analyst for the Private Companies Team. He graduated MEng (Hons) in Mechanical Engineering from the University of Edinburgh in 2012.

IMPORTANT INFORMATION

Baillie Gifford & Co and Baillie Gifford & Co Limited are authorised and regulated by the Financial Conduct Authority (FCA). Baillie Gifford & Co Limited is an Authorised Corporate Director of OEICs.

Baillie Gifford Overseas Limited provides investment management and advisory services to non-UK Professional/ Institutional clients only. Baillie Gifford Overseas Limited is wholly owned by Baillie Gifford & Co. Baillie Gifford Overseas Limited is authorised and regulated by the Financial Conduct Authority in the UK.

Persons resident or domiciled outside the UK should consult with their professional advisers as to whether they require any governmental or other consents in order to enable them to invest, and with their tax advisers for advice relevant to their own particular circumstances.

Financial intermediaries

This document is suitable for use of financial intermediaries. Financial intermediaries are solely responsible for any further distribution and Baillie Gifford takes no responsibility for the reliance on this document by any other person who did not receive this document directly from Baillie Gifford.

Europe

Baillie Gifford Investment Management (Europe) Ltd (BGE) is authorised by the Central Bank of Ireland as an AIFM under the AIFM Regulations and as a UCITS management company under the UCITS Regulation. BGE also has regulatory permissions to perform Individual Portfolio Management activities. BGE provides investment management and advisory services to European (excluding UK) segregated clients. BGE has been appointed as UCITS management company to the following UCITS umbrella company; Baillie Gifford Worldwide Funds plc. BGE is a wholly owned subsidiary of Baillie Gifford Overseas Limited, which is wholly owned by Baillie Gifford & Co. Baillie Gifford Overseas Limited and Baillie Gifford & Co are authorised and regulated in the UK by the Financial Conduct Authority.

Hong Kong

Baillie Gifford Asia (Hong Kong) Limited 百利亞洲(香港)有限公司 is wholly owned by Baillie Gifford Overseas Limited and holds a Type 1 licence from the Securities & Futures Commission of Hong Kong to market and distribute Baillie Gifford's range of collective investment schemes to professional investors in Hong Kong. Baillie Gifford Asia (Hong Kong) Limited 百利亞洲(香港)有限公司 can be contacted at Suites 2713-2715, Two International Finance Centre, 8 Finance Street, Central, Hong Kong, Telephone +852 3756 5700.

South Korea

Baillie Gifford Overseas Limited is licensed with the Financial Services Commission in South Korea as a cross border Discretionary Investment Manager and Non-discretionary Investment Adviser.

Japan

Mitsubishi UFJ Baillie Gifford Asset Management Limited ('MUBGAM') is a joint venture company between Mitsubishi UFJ Trust & Banking Corporation and Baillie Gifford Overseas Limited. MUBGAM is authorised and regulated by the Financial Conduct Authority.

Australia

Baillie Gifford Overseas Limited (ARBN 118 567 178) is registered as a foreign company under the Corporations Act 2001 (Cth) and holds Foreign Australian Financial Services Licence No 528911. This material is provided to you on the basis that you are a "wholesale client" within the meaning of section 761G of the Corporations Act 2001 (Cth) ("Corporations Act"). Please advise Baillie Gifford Overseas Limited immediately if you are not a wholesale client. In no circumstances may this document be made available to a "retail client" within the meaning of section 761G of the Corporations Act.

This material contains general information only. It does not take into account any person's objectives, financial situation or needs.

Israel

Baillie Gifford Overseas is not licensed under Israel's Regulation of Investment Advising, Investment Marketing and Portfolio Management Law, 5755-1995 (the Advice Law) and does not carry insurance pursuant to the Advice Law. This document is only intended for those categories of Israeli residents who are qualified clients listed on the First Addendum to the Advice Law.

South Africa

Baillie Gifford Overseas Limited is registered as a Foreign Financial Services Provider with the Financial Sector Conduct Authority in South Africa.

North America

Baillie Gifford International LLC is wholly owned by Baillie Gifford Overseas Limited; it was formed in Delaware in 2005 and is registered with the SEC. It is the legal entity through which Baillie Gifford Overseas Limited provides client service and marketing functions in North America. Baillie Gifford Overseas Limited is registered with the SEC in the United States of America.

The Manager is not resident in Canada, its head office and principal place of business is in Edinburgh, Scotland. Baillie Gifford Overseas Limited is regulated in Canada as a portfolio manager and exempt market dealer with the Ontario Securities Commission ('OSC'). Its portfolio manager licence is currently passported into Alberta, Quebec, Saskatchewan, Manitoba and Newfoundland & Labrador whereas the exempt market dealer licence is passported across all Canadian provinces and territories. Baillie Gifford International LLC is regulated by the OSC as an exempt market and its licence is passported across all Canadian provinces and territories. Baillie Gifford Investment Management (Europe) Limited ('BGE') relies on the International Investment Fund Manager Exemption in the provinces of Ontario and Quebec.

Singapore

Baillie Gifford Asia (Singapore) Private Limited is wholly owned by Baillie Gifford Overseas Limited and is regulated by the Monetary Authority of Singapore as a holder of a capital markets services licence to conduct fund management activities for institutional investors and accredited investors in Singapore. Baillie Gifford Overseas Limited, as a foreign related corporation of Baillie Gifford Asia (Singapore) Private Limited, has entered into a cross-border business arrangement with Baillie Gifford Asia (Singapore) Private Limited, and shall be relying upon the exemption under regulation 4 of the Securities and Futures (Exemption for Cross-Border Arrangements) (Foreign Related Corporations) Regulations 2021 which enables both Baillie Gifford Overseas Limited and Baillie Gifford Asia (Singapore) Private Limited to market the full range of segregated mandate services to institutional investors and accredited investors in Singapore. The information contained in this communication is meant purely for informational purposes and should not be relied upon as financial advice.

Baillie Gifford™