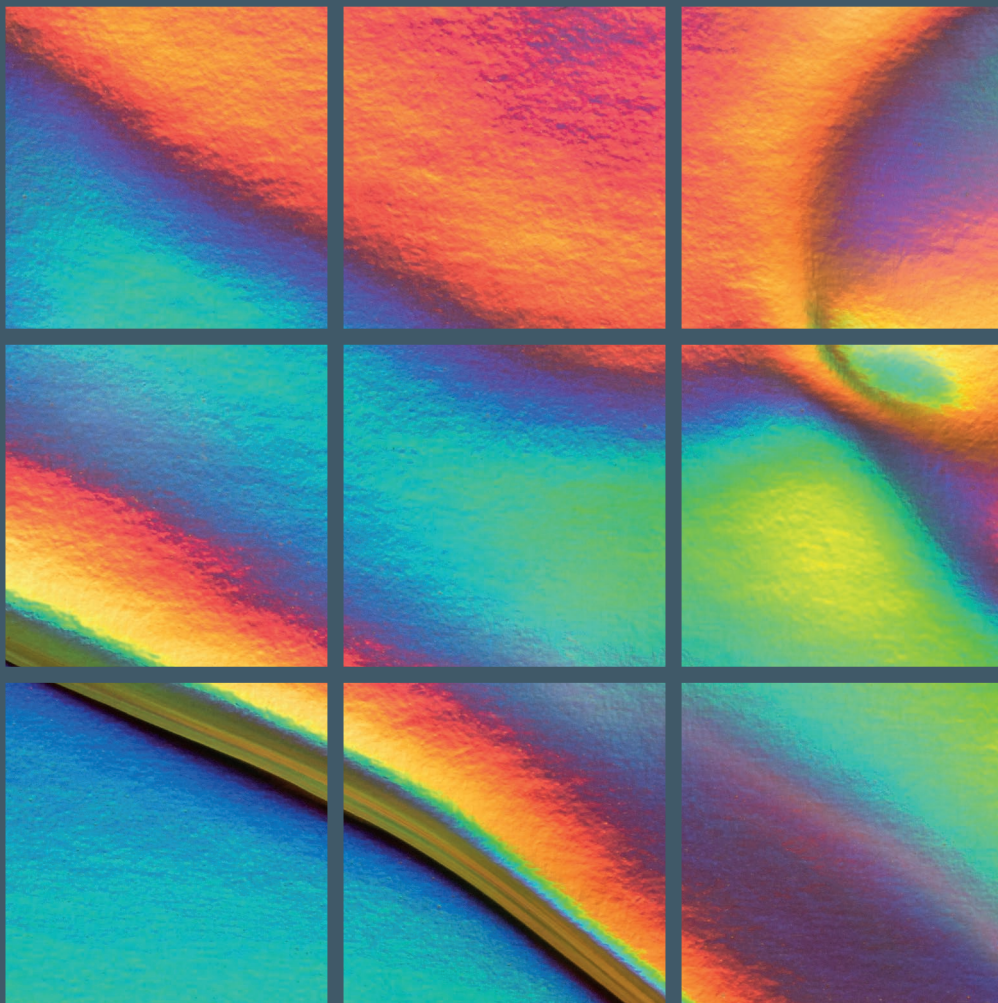


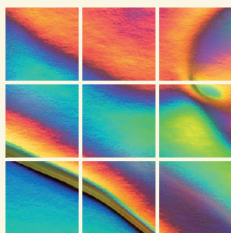
THE MONKS INVESTMENT TRUST PLC

Global growth from
different perspectives



Interim Financial Report
31 October 2021





Global growth from different perspectives

The objective of Monks is to invest globally to achieve capital growth. This takes priority over income and dividends. Monks seeks to meet its objective by investing principally in a portfolio of global quoted equities.

Financial Highlights

| | 31 October 2021 | 30 April 2021 | % change |
|-----------------------------------|-----------------|---------------|----------|
| Net asset value per share (NAV)*† | 1,444.8p | 1,358.1p | 6.4 |
| Share price | 1,382.0p | 1,396.0p | (1.0) |
| FTSE World Index#‡ | | | 7.9 |
| (Discount)/premium*† | (4.3%) | 2.8% | |
| Active share* | 86% | 86% | |

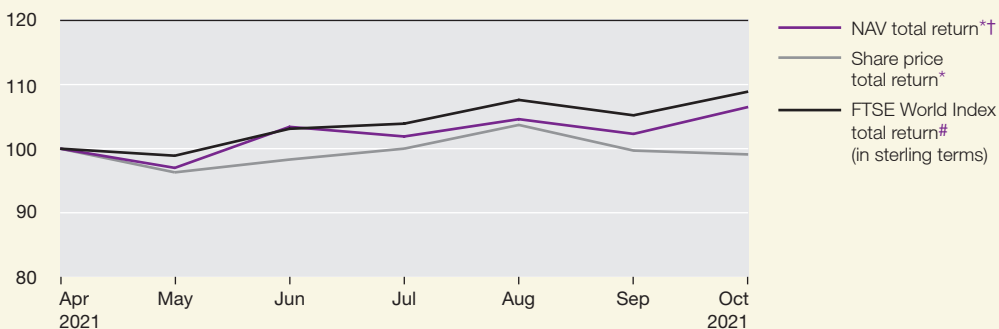
Total Return Performance*‡

To 31 October 2021

| Total return % | Six months % | 1 year % | 3 years % | 5 years % | 10 years % |
|-------------------|--------------|----------|-----------|-----------|------------|
| Net asset value*† | 6.5 | 30.7 | 93.5 | 148.0 | 319.8 |
| Share price | (0.9) | 20.8 | 80.7 | 157.8 | 348.2 |
| FTSE World Index# | 8.9 | 32.3 | 54.2 | 83.6 | 273.0 |

For six months to 31 October 2021

(figures plotted on a monthly basis and rebased to 100 at 30 April 2021)



* Alternative Performance Measure – see Glossary of Terms and Alternative Performance Measures on pages 22 to 24.

† With borrowings deducted at fair value.

The FTSE World Index (in sterling terms) is the principal index against which performance is measured.

‡ Source: Baillie Gifford/Refinitiv and relevant underlying index providers. See disclaimer on page 21.

Past performance is not a guide to future performance.

Interim Management Report

In biology, 'punctuated equilibrium' describes the gradual, then sudden nature of radical change: the concept that, most of the time, change happens only incrementally, but sometimes external factors coincide to create the conditions which force dramatic change. There are parallels between natural ecosystems and our global economy. Many people consider the pandemic an exogenous cyclical shock, a temporary aberration from the norm. At some point it will pass, the economy will recover, and everything will go back to normal. However, could the pandemic be the equivalent of a rise in sea levels, or the arrival of a new predator, which forces adaptation and disrupts the equilibrium? Isn't it more likely that some behaviours and industries will change permanently?

The Monks Investment Trust seeks to build a diversified portfolio of global equities that is well placed to capture growth resulting from structural economic and societal changes. Shareholders will be aware that we have believed for some time that the impact of technology is broadening, driving change, and eroding inertia in hitherto untouched sectors. The pandemic has accelerated this change. There are an increasing number of technology-led or digitised companies within the Monks portfolio. These operate across a growing spectrum of the economy in areas including entertainment, automobiles and transportation, real estate, education, payments, telecommunications, retail, enterprise software, and 'last-mile' logistics. Rather than thinking of this period as having pulled forward some portion of finite demand, it would be more accurate to think of it as a catalyst which has tipped a range of industries out of their previous equilibria. The erosion of inertia serves to highlight how important it is to recognise early the likely adoption of new products and services and the enduring growth opportunities they represent.

During the first half of our financial year, the Company produced a positive net asset value (NAV)* total return of +6.5% compared to +8.9% for the comparative index (FTSE World in sterling). The share price total return was slightly negative (-0.9%), reflecting the decline in the premium rating of our shares relative to NAV, which moved to a discount.

In the context of our investment approach, six months is a very short period. The Board and managers believe that performance should be judged over the longer term. Over the 5 years to the end of October 2021, the NAV* total return has been +148.0%, and the share price total return +157.8%, compared to the comparative index total return of +83.6%.

Portfolio Changes

We have continued to seek out potential beneficiaries of disrupted equilibria and permanently altered behaviours. One example is the new holding in maker of home fitness equipment, Peloton. Peloton represents a new alternative to gym memberships for those who want to participate in exercise classes. The company combines desirable fitness hardware such as spin-bikes, with integrated software offering live and on-demand classes led by world-class instructors. This union of physical and digital excellence represents a compelling proposition for customers and a deep and lasting competitive advantage. As the company continues to lower hardware prices and attract more users with further software and content innovation, the addressable market could be many times larger than it is today.

Another new holding seeking to redefine its industry is Carvana, the US online used car market's leading player. The company's vertically integrated business model should allow it to positively shape the user experience and remove the friction typically associated with car buying. Its scale and brand are key for future growth and we are optimistic that Carvana is well placed to disrupt industry incumbents.

* With borrowing deducted at fair value.

Past performance is not a guide to future performance. For a definition of terms used see Glossary of Terms and Alternative Performance Measures on pages 22 to 24. Total return information is sourced from Baillie Gifford/Refinitiv and relevant underlying index providers. See disclaimer on page 21.

Perhaps less pandemic-induced are the changing consumer preferences which underpin our purchase of Oatly. Oatly produces dairy alternatives from fibre-rich oats. The company has developed an eye-catching brand and should benefit from the considerable move away from traditional dairy to healthier and more environmentally friendly alternatives.

The names highlighted thus far are all classed as Rapid Growth in the Monks portfolio. We continue to invest across the other growth profiles (Stalwart, Cyclical and Latent), where growth will manifest in different ways. An example is the new holding in Japanese car parts supplier, DENSO. Historically tied to the Toyota group, DENSO has recently started to broaden its customer base to find new opportunities. Furthermore, the company's long-term plans are well aligned with the accelerating global shift to electric vehicles, and the rising proportion of a car's value being attributed to electronics. Growth here is likely to be more cyclical in nature, but perhaps less appreciated by the market as a result. In the Stalwart Growth category, software is an area of increasing enthusiasm, as it becomes increasingly important across a broad range of industries. Our conviction is evident in another new holding: Certara. This company develops bio-simulation software (the software modelling of biological processes). Certara's software enables biotechnology companies to simulate how their drugs will react in different human organs, which has the potential to save significant time and cost in physical human trials and therefore offers attractive returns on investment for Certara's customers. Also in the software-related sphere, we established a position in Topicus, an owner of a growing portfolio of software businesses. Topicus seeks to provide mission-critical software to a broad range of sectors and end-users.

Funding for these positions has come from the sale of a handful of portfolio holdings. Some of these have performed admirably, but relative growth prospects have dimmed. In some other cases, we believe that their competitive position is weakening. Examples of the former include Advantest and

Resmed. Advantest, the semi-conductor testing business, operates in a duopoly with another Monks holding, Teradyne. The company's strong performance against a hugely supportive backdrop of healthy demand in recent years has been fully reflected in the share price. Meanwhile, slowing growth and underwhelming efforts on the software side of the business have prompted the sale of Resmed, the provider of medical equipment for sufferers of sleep apnea. Similarly, Lending Tree, the US online credit card and mortgage platform has seen peers making more impressive headway in this space and we are concerned at slowing growth rates in its core markets.

We have sold both EOG Resources, the US oil and gas business, and Fairfax Financial, the Canadian insurance and investment company headed by Prem Watsa. EOG has been among the leaders in the US shale oil and gas market by improving efficiencies and reducing the environmental impact of its operations. Its management team have been strong stewards of the business and the corporate culture of innovation and improvement has impressed us. However, the inexorable direction of travel towards alternative energy has prompted us to sell and move on. In contrast, Fairfax has delivered disappointing investment results in recent years, having had a strong long-term track record. We have been disappointed by some recent Board appointments at Fairfax, which, in our opinion, were insufficiently independent and did not represent good governance.

Unlisted Holdings

Prior to the Company's 30 April 2021 year end, we successfully added to our holding in The Schiehallion Fund, a closed-end vehicle managed by Baillie Gifford, which invests in late-stage private companies. This makes Schiehallion the largest holding in the Monks portfolio and we continue to be excited by the long-term growth potential of the underlying portfolio. Whilst this is our core exposure to private company growth opportunities, we do invest directly in private companies where the investment case is particularly attractive. At 31 October 2021, the combined ordinary and C share Schiehallion holding

represented 4.3% of total assets and a further 1.7% of the portfolio was invested directly in private companies. It should be noted that the Schiehallion holdings are valued at market price and are deducted from the calculation of assets for management fee purposes.

Gearing

The level of invested gearing at the period end stood at 1.7%, compared to 0.8% six months earlier. The modest increase in gearing levels reflects the deployment of cash into equity markets. Over the medium term, and where the appropriate opportunity presents itself, we would expect to move the gearing level towards the intended long-term neutral position of 10%.

Dividend

No interim dividend is being paid. A single final dividend will typically be paid after the AGM, reflecting the Company's focus on capital growth.

Positioning and Outlook

The pandemic has triggered an avalanche of change and we believe that there will be structural consequences we do not yet fully understand or appreciate. Innovation is speeding up and spreading across the economy. In this regard, we believe that we are closer to the beginning of this process than the end. The approach taken by The Monks Investment Trust seeks to embrace this change – accepting that growth in revenues, earnings and cash flows can be delivered in different ways.

We believe many of the companies in the Monks portfolio will be beneficiaries of change and seek to guard against complacency by ensuring that our view remains differentiated. By focusing on these fundamentals and by being open-minded about the sources of growth opportunities, we believe we can continue to grow savers' capital within The Monks Investment Trust.

Baillie Gifford & Co Limited
Managers and Secretaries
6 December 2021

The Managers' Core Investment Beliefs

We believe the following features of Monks provide a sustainable basis for adding value for shareholders.

Active Management

- We invest in attractive companies using a 'bottom-up' investment process. Macroeconomic forecasts are of relatively little interest to us.
- High active share* provides the potential for adding value.
- We ignore the structure of the index – for example the location of a company's HQ and therefore its domicile are less relevant to us than where it generates sales and profits.
- Large swathes of the market are unattractive and of no interest to us.
- As index agnostic global investors we can go anywhere and only invest in the best ideas.
- As the portfolio is very different from the index, we expect portfolio returns to vary – sometimes substantially and often for prolonged periods.

Committed Growth Investors

- In the long run, share prices follow fundamentals; growth drives returns.
- We aim to produce a portfolio of stocks with above average growth – this in turn underpins the ability of Monks to add value.
- We have a differentiated approach to growth, focusing on the type of growth that we expect a company to deliver. All holdings fall into one of four growth categories – as set out on pages 6 and 7.
- The use of these four growth categories ensures a diversity of growth drivers within a disciplined framework.

Long-Term Perspective

- Long-term holdings mean that company fundamentals are given time to drive returns.
- We prefer companies that are managed with a long-term mindset, rather than those that prioritise the management of market expectations.
- We believe our approach helps us focus on what is important during the inevitable periods of underperformance.
- Short-term portfolio results are random.
- As longer-term shareholders we are able to have greater influence on environmental, social and governance matters.

Dedicated Team with Clear Decision-making Process

- Senior and experienced team drawing on the full resources of Baillie Gifford.
- Alignment of interests – the investment team responsible for Monks all own shares in the Company.

Portfolio Construction

- Investments are held in three broad holding sizes – as set out on pages 6 and 7.
- This allows us to back our judgement in those stocks for which we have greater conviction, and to embrace the asymmetry of returns through 'incubator' positions in higher risk/return stocks.
- 'Asymmetry of returns': some of our smaller positions will struggle and their share prices will fall; those that are successful may rise many fold. The latter should outweigh the former.

Low Cost

- Investors should not be penalised by high management fees.
- Low turnover and trading costs benefit shareholders.

* For a definition of terms used see Glossary of Terms and Alternative Performance Measures on pages 22 to 24.

Thirty Largest Holdings as at 31 October 2021

| Name | Growth category | Business description | Fair value £'000 | % of total assets* |
|--------------------------------------|-----------------|--|---------------------|--------------------------|
| The Schiehallion Fund | Rapid | Global unlisted growth equity investment trust | 83,560 | 2.4 |
| The Schiehallion Fund – C Shares | Rapid | Global unlisted growth equity investment trust | 67,666 | 1.9 |
| | | | 151,226 | 4.3 |
| Sea Limited | Rapid | Online and digital gaming | 81,151 | 2.3 |
| Alphabet | Stalwart | Online search engine | 79,854 | 2.2 |
| Microsoft | Stalwart | Software and cloud computing enterprise | 77,781 | 2.2 |
| Tesla | Rapid | Electric cars and renewable energy solutions | 75,592 | 2.1 |
| Moody's | Stalwart | Credit rating agency | 75,036 | 2.1 |
| Prosus | Rapid | Media and ecommerce company | 73,151 | 2.1 |
| Cloudflare | Rapid | Cloud based IT services business | 70,358 | 2.0 |
| Martin Marietta Materials | Cyclical | Cement and aggregates manufacturer | 65,654 | 1.8 |
| Anthem | Stalwart | Healthcare insurer | 65,111 | 1.8 |
| Amazon.com | Rapid | Online retailer | 60,476 | 1.7 |
| Ryanair | Latent | Low cost European airline | 59,517 | 1.7 |
| Moderna | Rapid | Drug discovery using mRNA technology | 59,428 | 1.7 |
| Shopify | Rapid | Online commerce platform | 56,868 | 1.6 |
| Prudential | Stalwart | International life insurance | 56,153 | 1.6 |
| Arthur J. Gallagher | Stalwart | Insurance broker | 48,997 | 1.4 |
| Reliance Industries | Rapid | Indian energy conglomerate | 48,042 | 1.4 |
| Pernod Ricard | Stalwart | Global spirits manufacturer | 47,533 | 1.3 |
| AIA | Stalwart | Asian life insurer | 47,244 | 1.3 |
| Service Corporation International | Stalwart | Death care services | 46,860 | 1.3 |
| Meituan Dianping | Rapid | Online commerce platform | 46,600 | 1.3 |
| CBRE Group | Cyclical | Commercial real estate operator | 44,419 | 1.2 |
| Albemarle | Cyclical | Speciality chemicals | 42,325 | 1.2 |
| TSMC | Cyclical | Semiconductor manufacturer | 42,116 | 1.2 |
| Olympus | Stalwart | Optoelectronic products | 42,084 | 1.2 |
| Meta | Stalwart | Social networking website | 41,119 | 1.2 |
| Trupanion | Rapid | Pet health insurance provider | 40,999 | 1.2 |
| BHP | Latent | Mineral exploration and production | 40,493 | 1.1 |
| MasterCard | Stalwart | Electronic payments network and related services | 40,163 | 1.1 |
| | | | 1,726,350 | 48.6 |

* For a definition of terms used see Glossary of Terms and Alternative Performance Measures on pages 22 to 24.

Investment Portfolio by Growth Category as at 31 October 2021*

| Holding Size | Growth Stalwarts | 26.7% | Rapid Growth | 52.0% | Cyclical Growth | 15.5% | Latent Growth | 5.8% | Total |
|---|-----------------------------------|---------------------------------|----------------------------------|-------|---------------------------|-------|------------------------------|------|-------------|
| | | % | | % | | % | | % | % |
| Highest conviction holdings c.2.0% each | Alphabet | 2.3 | The Schiehallion Fund | 2.4 | Martin Marietta Materials | 1.9 | Ryanair | 1.7 | 31.7 |
| | Microsoft | 2.2 | Sea Limited | 2.3 | | | | | |
| | Moody's | 2.2 | Tesla | 2.2 | | | | | |
| | Anthem | 1.9 | Prosus | 2.1 | | | | | |
| | Prudential | 1.6 | Cloudflare | 2.0 | | | | | |
| | | | The Schiehallion Fund – C Shares | 1.9 | | | | | |
| | | | Amazon.com | 1.7 | | | | | |
| | | | Moderna | 1.7 | | | | | |
| | | | Shopify | 1.6 | | | | | |
| | | | | | | | | | |
| Average sized holdings c.1.0% each | Arthur J. Gallagher | 1.4 | Reliance Industries | 1.4 | CBRE Group | 1.3 | BHP | 1.2 | 46.7 |
| | Pernod Ricard | 1.4 | Meituan Dianping | 1.3 | Albemarle | 1.2 | Rio Tinto | 1.0 | |
| | AIA | 1.4 | Trupanion | 1.2 | TSMC | 1.2 | | | |
| | Service Corporation International | 1.4 | The Trade Desk | 1.1 | CRH | 1.1 | | | |
| | Olympus | 1.2 | Alibaba | 1.0 | SiteOne Landscape Supply | 0.9 | | | |
| | Meta | 1.2 | Farfetch | 1.0 | Teradyne | 0.9 | | | |
| | MasterCard | 1.2 | Doordash | 0.9 | Booking Holdings | 0.9 | | | |
| | Estée Lauder | 1.1 | HDFC | 0.9 | Atlas Copco | 0.7 | | | |
| | Thermo Fisher Scientific | 1.0 | Twilio | 0.9 | Richemont | 0.7 | | | |
| | S&P Global | 1.0 | Zillow | 0.9 | Charles Schwab | 0.7 | | | |
| | Sysmex | 0.9 | Illumina | 0.9 | | | | | |
| | Broadridge Financial Solutions | 0.8 | Schibsted | 0.8 | | | | | |
| | adidas | 0.7 | Adyen | 0.8 | | | | | |
| | Certara | 0.7 | Alnylam Pharmaceuticals | 0.8 | | | | | |
| | | | MercadoLibre | 0.7 | | | | | |
| | | | Datadog | 0.7 | | | | | |
| | | | Axon Enterprise | 0.7 | | | | | |
| | | | Naspers | 0.7 | | | | | |
| | | | Wayfair | 0.7 | | | | | |
| | | | Netflix | 0.7 | | | | | |
| | | ByteDance | 0.7 | | | | | | |
| | | Snowflake | 0.7 | | | | | | |
| Incubator holdings c.0.5% each | CoStar | 0.6 | Ping An Insurance | 0.6 | Markel | 0.6 | Sberbank of Russia | 0.6 | 21.6 |
| | Topicus.com | 0.3 | Lemonade | 0.6 | Epiroc | 0.6 | Stericycle | 0.4 | |
| | Hoshizaki Corp | 0.2 | Spotify | 0.6 | SMC | 0.6 | Howard Hughes | 0.3 | |
| | | | Li Auto | 0.6 | Deutsche Boerse | 0.4 | IAC/Interactivecorp | 0.3 | |
| | | | ICICI Bank | 0.6 | Wizz Air Holdings | 0.4 | Brilliance China Automotive | 0.2 | |
| | | | M3 | 0.5 | Lyft | 0.4 | Silk Invest Africa Food Fund | 0.1 | |
| | | | Teladoc | 0.5 | Hays | 0.3 | | | |
| | | | Carvana | 0.5 | PageGroup | 0.3 | | | |
| | | | CyberAgent | 0.5 | Sands China | 0.2 | | | |
| | | | Denali Therapeutics | 0.5 | Orica | 0.2 | | | |
| | | | Genmab | 0.5 | | | | | |
| | | | DENSO | 0.5 | | | | | |
| | | | Adevinta Asa | 0.5 | | | | | |
| | | | Appian | 0.5 | | | | | |
| | | | Bumble | 0.4 | | | | | |
| | | | ICICI Prudential Life Insurance | 0.4 | | | | | |
| | | | Epic Games | 0.4 | | | | | |
| | | | Staar Surgical | 0.4 | | | | | |
| | | | Abiomed | 0.4 | | | | | |
| | | | Renishaw | 0.4 | | | | | |
| | | Oscar Health | 0.4 | | | | | | |
| | | Peloton Interactive | 0.4 | | | | | | |
| | | Chegg | 0.3 | | | | | | |
| | | Sensyne Health | 0.3 | | | | | | |
| | | Novocure | 0.3 | | | | | | |
| | | Exact Sciences | 0.3 | | | | | | |
| | | iRobot | 0.3 | | | | | | |
| | | Vimeo | 0.3 | | | | | | |
| | | Oatly | 0.3 | | | | | | |
| | | Mail.ru Group | 0.3 | | | | | | |
| | | Ant International | 0.3 | | | | | | |
| | | B3 Group | 0.2 | | | | | | |
| | | Ubisoft Entertainment | 0.2 | | | | | | |
| | | Tencent Music Entertainment | 0.2 | | | | | | |
| | | Autohome | 0.1 | | | | | | |
| | | Stripe | 0.1 | | | | | | |
| | | Ping An Healthcare & Technology | 0.1 | | | | | | |
| | | Istyle | 0.1 | | | | | | |
| | | Space Exploration Technologies | 0.1 | | | | | | |
| | | KE Holdings | 0.1 | | | | | | |

Growth Stalwarts

Company Characteristics

- Durable franchise
- Deliver robust profitability in most macroeconomic environments
- Competitive advantage includes dominant local scale, customer loyalty and strong brands

c.10% p.a. earnings growth.

Rapid Growth

Company Characteristics

- Early stage businesses with vast growth opportunity
- Innovators attacking existing profit pools or creating new markets

c.15% to 25% p.a. earnings growth.

Cyclical Growth

Company Characteristics

- Subject to macroeconomic and capital cycles with significant structural growth prospects
- Strong management teams highly skilled at capital allocation

c.10% to 15% p.a. earnings growth through a cycle.

Latent Growth

Company Characteristics

- Company specific catalyst will drive above average earnings in future
- Unspectacular recent operational performance and therefore out of favour

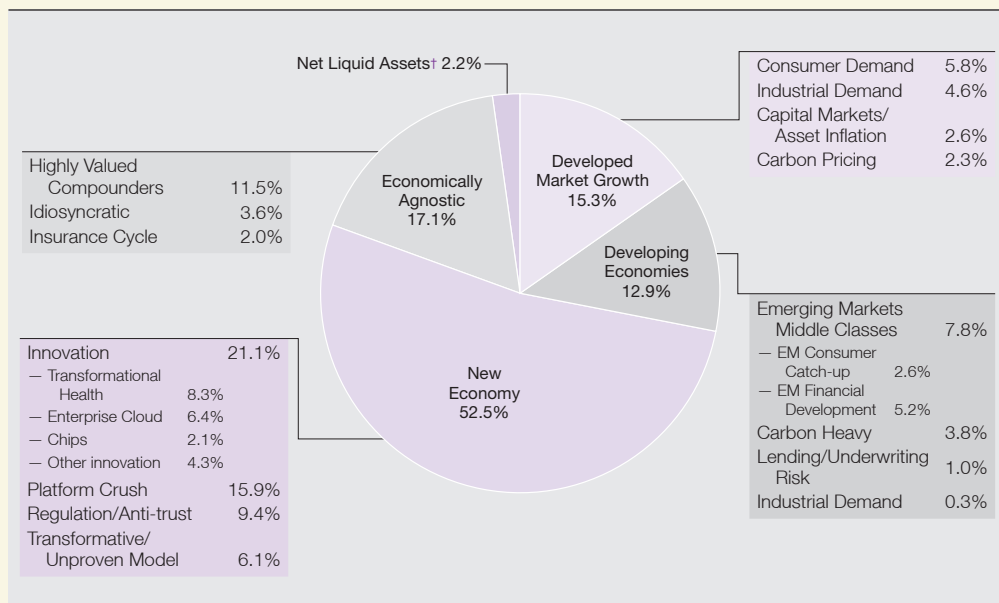
Earnings growth to accelerate over time.

* Excludes net liquid assets.

Portfolio Positioning as at 31 October 2021**

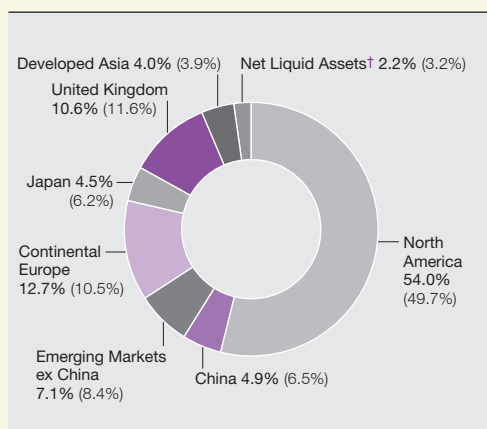
Although the Managers' approach to stock picking is resolutely 'bottom-up' in nature and pays no attention to the structure of the index, it is essential to understand the risks of each investment and, in turn, where there may be concentrations of exposures. The charts below outline the key exposures of the portfolio.

Thematic Exposure – Risks and Opportunities



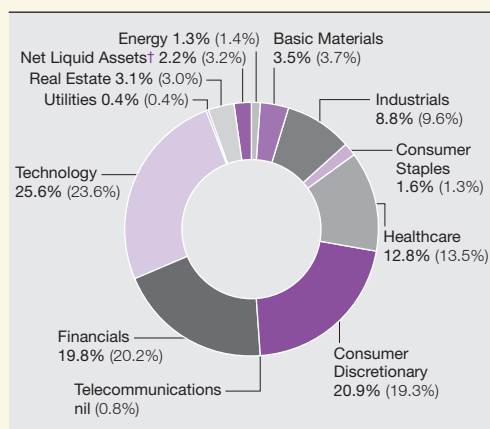
Geographical at 31 October 2021

(30 April 2021)



Sectoral at 31 October 2021

(30 April 2021)



* Expressed as a percentage of total assets.

† For a definition of terms used see Glossary of Terms and Alternative Performance Measures on pages 22 to 24.

Principal Risks and Uncertainties

The principal risks facing the Company, which have not changed since the date of the Company's Annual Report and Financial Statements for the year ended 30 April 2021, are financial risk, investment strategy risk, regulatory risk, custody and depository risk, operational risk, discount risk, political risk and leverage risk. An explanation of these risks and how they are managed is set out on pages 21 and 22 of that report, which is available on the Company's website: monksinvestmenttrust.co.uk.

Responsibility Statement

We confirm that to the best of our knowledge:

- a) the condensed set of Financial Statements has been prepared in accordance with FRS 104 'Interim Financial Reporting';
- b) the Interim Management Report includes a fair review of the information required by Disclosure Guidance and Transparency Rule 4.2.7R (indication of important events during the first six months, and their impact on the Financial Statements, and a description of principal risks and uncertainties for the remaining six months of the year); and
- c) the Interim Financial Report includes a fair review of the information required by Disclosure Guidance and Transparency Rule 4.2.8R (disclosure of related party transactions and changes therein).

On behalf of the Board
KS Sternberg
Chairman
6 December 2021

Income Statement (unaudited)

| | Notes | For the six months ended 31 October 2021 | | | For the six months ended 31 October 2020 | | | For the year ended 30 April 2021 (audited) | | |
|--|-------|--|------------------|----------------|--|------------------|----------------|--|------------------|------------------|
| | | Revenue £'000 | Capital £'000 | Total £'000 | Revenue £'000 | Capital £'000 | Total £'000 | Revenue £'000 | Capital £'000 | Total £'000 |
| Gains on investments | | – | 203,591 | 203,591 | – | 513,864 | 513,864 | – | 1,069,700 | 1,069,700 |
| Currency (losses)/gains | | – | (383) | (383) | – | 1,186 | 1,186 | – | 1,916 | 1,916 |
| Income from investments and interest receivable | | 16,018 | – | 16,018 | 11,509 | – | 11,509 | 22,529 | – | 22,529 |
| Investment management fee | 3 | (5,719) | – | (5,719) | (4,516) | – | (4,516) | (10,011) | – | (10,011) |
| Other administrative expenses | | (869) | – | (869) | (776) | – | (776) | (1,656) | – | (1,656) |
| Net return before finance costs and taxation | | 9,430 | 203,208 | 212,638 | 6,217 | 515,050 | 521,267 | 10,862 | 1,071,616 | 1,082,478 |
| Finance costs of borrowings | | (2,507) | – | (2,507) | (2,621) | – | (2,621) | (5,027) | – | (5,027) |
| Net return on ordinary activities before taxation | | 6,923 | 203,208 | 210,131 | 3,596 | 515,050 | 518,646 | 5,835 | 1,071,616 | 1,077,451 |
| Tax on ordinary activities | 4 | (910) | (793) | (1,703) | 2,599 | (170) | 2,429 | 1,966 | (958) | 1,008 |
| Net return on ordinary activities after taxation | | 6,013 | 202,415 | 208,428 | 6,195 | 514,880 | 521,075 | 7,801 | 1,070,658 | 1,078,459 |
| Net return per ordinary share | 5 | 2.54p | 85.61p | 88.15p | 2.76p | 229.51p | 232.27p | 3.42p | 469.83p | 473.25p |

The total column of this statement represents the profit and loss account of the Company. The supplementary revenue and capital columns are prepared under guidance issued by the Association of Investment Companies.

All revenue and capital items in this statement derive from continuing operations.

A Statement of Comprehensive Income is not required as the Company does not have any other comprehensive income and the net return on ordinary activities after taxation is both the profit and total comprehensive income for the period.

Balance Sheet (unaudited)

| | Notes | At 31 October 2021 £'000 | At 30 April 2021 (audited) £'000 |
|---|-------|--------------------------------|---|
| Fixed assets | | | |
| Investments held at fair value through profit or loss | 7 | 3,470,415 | 3,238,130 |
| Current assets | | | |
| Debtors | | 7,197 | 3,936 |
| Cash and cash equivalents | | 78,736 | 108,723 |
| | | 85,933 | 112,659 |
| Creditors | | | |
| Amounts falling due within one year: | | | |
| Other creditors | | (6,111) | (5,063) |
| | | (6,111) | (5,063) |
| Net current assets | | | |
| | | 79,822 | 107,596 |
| Total assets less current liabilities | | | |
| | | 3,550,237 | 3,345,726 |
| Creditors | | | |
| Amounts falling due after more than one year: | | | |
| Loan notes | 8 | (99,851) | (99,848) |
| Debenture stock | 8 | (39,956) | (39,940) |
| Provision for tax liability | 9 | (1,751) | (958) |
| | | (141,558) | (140,746) |
| | | 3,408,679 | 3,204,980 |
| Capital and reserves | | | |
| Share capital | | 11,823 | 11,823 |
| Share premium account | | 262,183 | 262,183 |
| Capital redemption reserve | | 8,700 | 8,700 |
| Capital reserve | | 3,061,629 | 2,859,214 |
| Revenue reserve | | 64,344 | 63,060 |
| Shareholders' funds | 10 | 3,408,679 | 3,204,980 |
| Shareholders' funds per ordinary share | | | |
| (borrowings at book value) | 10 | 1,441.6p | 1,355.4p |
| Net asset value per ordinary share* | | | |
| (borrowings at par value) | | 1,441.5p | 1,355.3p |
| Net asset value per ordinary share* | | | |
| (borrowings at fair value) | | 1,444.8p | 1,358.1p |
| Ordinary shares in issue | 10 | 236,453,859 | 236,453,859 |

* For a definition of terms used see Glossary of Terms and Alternative Performance Measures on pages 22 to 24.

Statement of Changes in Equity (unaudited)

For the six months ended 31 October 2021

| | Notes | Share capital £'000 | Share premium account £'000 | Capital redemption reserve £'000 | Capital reserve* £'000 | Revenue reserve £'000 | Shareholders' funds £'000 |
|---|-------|------------------------|-----------------------------------|---|------------------------------|-----------------------------|---------------------------------|
| Shareholders' funds at 1 May 2021 | | 11,823 | 262,183 | 8,700 | 2,859,214 | 63,060 | 3,204,980 |
| Net return on ordinary activities after taxation | | – | – | – | 202,415 | 6,013 | 208,428 |
| Dividends paid during the period | 6 | – | – | – | – | (4,729) | (4,729) |
| Shareholders' funds at 31 October 2021 | | 11,823 | 262,183 | 8,700 | 3,061,629 | 64,344 | 3,408,679 |

For the six months ended 31 October 2020

| | Notes | Share capital £'000 | Share premium account £'000 | Capital redemption reserve £'000 | Capital reserve* £'000 | Revenue reserve £'000 | Shareholders' funds £'000 |
|---|-------|------------------------|-----------------------------------|---|------------------------------|-----------------------------|---------------------------------|
| Shareholders' funds at 1 May 2020 | | 11,178 | 94,328 | 8,700 | 1,788,556 | 60,862 | 1,963,624 |
| Net return on ordinary activities after taxation | | – | – | – | 514,880 | 6,195 | 521,075 |
| Ordinary shares issued | 11 | 119 | 26,680 | – | – | – | 26,799 |
| Dividends paid during the period | 6 | – | – | – | – | (5,603) | (5,603) |
| Shareholders' funds at 31 October 2020 | | 11,297 | 121,008 | 8,700 | 2,303,436 | 61,454 | 2,505,895 |

* The Capital Reserve balance at 31 October 2021 includes holding gains on investments of £1,608,092,000 (31 October 2020 – gains of £1,045,847,000).

Condensed Cash Flow Statement (unaudited)

| Notes | Six months to 31 October 2021 £'000 | Six months to 31 October 2020 £'000 |
|--|--|--|
| Cash flows from operating activities | | |
| Net return on ordinary activities before taxation | 210,131 | 518,646 |
| Net gains on investments | (203,591) | (513,864) |
| Currency losses/(gains) | 383 | (1,186) |
| Finance costs of borrowings | 2,507 | 2,621 |
| Overseas tax incurred | (1,010) | (963) |
| Corporation tax refunded | – | 3,597 |
| Changes in debtors and creditors | 1,392 | 1,482 |
| Cash from operations* | 9,812 | 10,333 |
| Interest paid | (2,477) | (1,997) |
| Net cash inflow from operating activities | 7,335 | 8,336 |
| Net cash (outflow)/inflow from investing activities | (32,210) | 16,107 |
| Cash flow from financing activities | | |
| Equity dividends paid | 6 | (4,729) |
| Ordinary shares issued | – | 28,227 |
| Loan notes issued | – | 99,844 |
| Net borrowings repaid | – | (63,178) |
| Net cash (outflow)/inflow from financing activities | (4,729) | 59,290 |
| (Decrease)/increase in cash and cash equivalents | (29,604) | 83,733 |
| Exchange movements | (383) | (1,904) |
| Cash and cash equivalents at start of period | 108,723 | 19,537 |
| Cash and cash equivalents at end of period | 78,736 | 101,366 |

* Cash from operations includes dividends received of £17,208,000 (31 October 2020 – £12,133,000) and interest received of £nil (31 October 2020 – £361,000).

Notes to the Condensed Financial Statements (unaudited)

- 1 The condensed Financial Statements for the six months to 31 October 2021 comprise the statements set out on pages 10 to 14 together with the related notes on pages 15 to 18. They have been prepared in accordance with FRS 104 'Interim Financial Reporting' and the AIC's Statement of Recommended Practice issued in November 2014 and updated in April 2021 with consequential amendments. They have not been audited or reviewed by the Auditor pursuant to the Auditing Practices Board Guidance on 'Review of Interim Financial Information'. The Financial Statements for the six months to 31 October 2021 have been prepared on the basis of the same accounting policies as set out in the Company's Annual Report and Financial Statements at 30 April 2021.

Going Concern

The Directors have considered the Company's principal risks and uncertainties, as set out on page 9, together with the Company's current position, investment objective and policy, the level of demand for the Company's shares, the nature of its assets, its liabilities and projected income and expenditure. The Board has, in particular, considered the impact of market volatility during the Covid-19 pandemic. It is the Directors' opinion that the Company has adequate resources to continue in operational existence for the foreseeable future. The vast majority of the Company's investments are readily realisable and can be sold to meet its liabilities as they fall due. All borrowings require the prior approval of the Board. Gearing levels and compliance with covenants are reviewed by the Board on a regular basis. The Company has continued to comply with the investment trust status requirements of section 1158 of the Corporation Tax Act 2010 and the Investment Trust (Approved Company) Regulations 2011. Accordingly, the Directors consider it appropriate to adopt the going concern basis of accounting in preparing these Financial Statements and confirm that they are not aware of any material uncertainties which may affect the Company's ability to continue to do so over a period of at least twelve months from the date of approval of these Financial Statements.

- 2 The financial information contained within this Interim Financial Report does not constitute statutory accounts as defined in sections 434 to 436 of the Companies Act 2006. The financial information for the year ended 30 April 2021 has been extracted from the statutory accounts which have been filed with the Registrar of Companies. The Auditor's Report on those accounts was not qualified, did not include a reference to any matters to which the Auditor drew attention by way of emphasis without qualifying its report, and did not contain statements under sections 498(2) or (3) of the Companies Act 2006.
- 3 Baillie Gifford & Co Limited, a wholly owned subsidiary of Baillie Gifford & Co, has been appointed by the Company as its Alternative Investment Fund Manager (AIFM) and Company Secretary. The investment management function has been delegated to Baillie Gifford & Co. The management agreement can be terminated on six months' notice. The annual management fee is 0.45% on the first £750 million of total assets, 0.33% on the next £1 billion of total assets and 0.30% on the remaining total assets. For fee purposes, total assets is defined as the total value of all assets held less all liabilities (other than any liability in the form of debt intended for investment purposes) and excludes the value of the Company's holdings in The Schiehallion Fund, a closed-ended investment company managed by Baillie Gifford & Co. The Company does not currently hold any other collective investment vehicles managed by Baillie Gifford & Co. Where the Company holds investments in open-ended collective investment vehicles managed by Baillie Gifford, such as OEICs, Monks' share of any fees charged within that vehicle will be rebated to the Company. All debt drawn down during the periods under review is intended for investment purposes.

4 Tax on ordinary activities

The revenue tax charge for the periods to 30 April 2021 and 31 October 2020 included £3,664,000 and £3,597,000 respectively of UK corporation tax repaid in respect of the Company's financial years to 2008 and 2009 (31 October 2020) and 2008, 2009 and 2010 (30 April 2021), following successful legal action regarding the tax treatment of overseas dividend income. This amount had not previously been provided for, as recovery was not considered sufficiently probable. It was therefore recognised on receipt. As it exceeded the overseas withholding tax suffered in the period, this resulted in a positive revenue tax charge for those periods.

Interest on the corporation tax repayment was included within interest income.

The capital tax charge results from the Provision for Tax Liability in respect of Indian capital gains tax as detailed in note 9.

| | Six months to 31 October 2021 £'000 | Six months to 31 October 2020 £'000 | Year to 30 April 2021 (audited) £'000 |
|--|--|--|--|
| 5 Net return per ordinary share | | | |
| Revenue return on ordinary activities after taxation | 6,013 | 6,195 | 7,801 |
| Capital return on ordinary activities after taxation | 202,415 | 514,880 | 1,070,658 |
| Total net return | 208,428 | 521,075 | 1,078,459 |

Net return per ordinary share is based on the above totals of revenue and capital and on 236,453,859 (31 October 2020 – 224,337,011; 30 April 2021 – 227,881,626) ordinary shares, being the weighted average number of ordinary shares in issue during the period.

There are no dilutive or potentially dilutive shares in issue.

| | Six months to 31 October 2021 £'000 | Six months to 31 October 2020 £'000 | Year to 30 April 2021 (audited) £'000 |
|---|--|--|--|
| 6 Dividends | | | |
| Amounts recognised as distributions in the period: | | | |
| Previous year's final dividend of 2.00p (2020 – 2.50p), paid 7 September 2021 | 4,729 | 5,603 | 5,603 |
| Amounts paid and payable in respect of the period: | | | |
| Final dividend (2021 – 2.00p) | – | – | 4,729 |

No interim dividend has been declared in respect of the current period.

7 Fair Value Hierarchy

The Company's investments are financial assets held at fair value through profit or loss. The fair value hierarchy used to analyse the basis on which the fair values of such financial instruments are measured is described below. Fair value measurements are categorised on the basis of the lowest level input that is significant to the fair value measurement.

Level 1 – using unadjusted quoted prices for identical instruments in an active market;

Level 2 – using inputs, other than quoted prices included within Level 1, that are directly or indirectly observable (based on market data); and

Level 3 – using inputs that are unobservable (for which market data is unavailable).

An analysis of the Company's financial asset investments based on the fair value hierarchy described above is shown below.

| As at 31 October 2021 | Level 1 £'000 | Level 2 £'000 | Level 3 £'000 | Total £'000 |
|--|------------------|------------------|------------------|------------------|
| Listed equities | 3,254,529 | 156,432 | – | 3,410,961 |
| Unlisted equities | – | – | 59,454 | 59,454 |
| Total financial asset investments | 3,254,529 | 156,432 | 59,454 | 3,470,415 |

| As at 30 April 2021 (audited) | Level 1 £'000 | Level 2 £'000 | Level 3 £'000 | Total £'000 |
|--|------------------|------------------|------------------|------------------|
| Listed equities | 3,039,527 | 129,609 | – | 3,169,136 |
| Unlisted equities | – | – | 68,994 | 68,994 |
| Total financial asset investments | 3,039,527 | 129,609 | 68,994 | 3,238,130 |

The fair value of listed investments is either bid price or last traded price depending on the convention of the exchange on which the investment is listed. Listed Investments are categorised as Level 1 if they are valued using unadjusted quoted prices for identical instruments in an active market and as Level 2 if they do not meet all these criteria but are, nonetheless, valued using market data. Unlisted investments are valued at fair value by the Directors following a detailed review and appropriate challenge of the valuations proposed by the Managers. The Managers' unlisted investment policy applies methodologies consistent with the International Private Equity and Venture Capital Valuation Guidelines ('IPEV'). These methodologies can be categorised as follows: (a) market approach (multiples, industry valuation benchmarks and available market prices); (b) income approach (discounted cash flows); and (c) replacement cost approach (net assets). The Company's holdings in unlisted investments are categorised as Level 3 as unobservable data is a significant input to their fair value measurements.

- 8** At 31 October 2021 the total book value of the Company's borrowings amounted to £139,807,000 (30 April 2021 – £139,788,000). This comprised a £40m 6% debenture stock repayable in 2023 (30 April 2021 – £40m), loan notes of £60m repayable in 2054 (30 April 2021 – £60m), loan notes of £40m repayable in 2045 (30 April 2021 – £40m). Bank loans were undrawn as at 31 October 2021 and 30 April 2021.

The fair value of borrowings at 31 October 2021 was £132,218,000 (30 April 2021 – £133,524,000).

9 Provision for Tax Liability

The tax liability provision at 31 October 2021 of £1,751,000 (30 April 2021 – £958,000) relates to a potential liability for Indian capital gains tax that may arise on the Company's Indian investments should they be sold in the future, based on the net unrealised taxable capital gain at the period end and on enacted Indian tax rates. The amount of any future tax amounts payable may differ from this provision, depending on the value and timing of any future sales of such investments and future Indian tax rates.

10 Shareholders' Funds

| | 31 October 2021 | 30 April 2021 |
|--|----------------------------|--------------------------|
| Shareholders' funds | £3,408,679,000 | £3,204,980,000 |
| Number of ordinary shares in issue at the period end | 236,453,859 | 236,453,859 |
| Shareholders' funds per ordinary share | 1,441.6p | 1,355.4p |

The shareholders' funds figures above have been calculated after deducting borrowings at book value, in accordance with the provisions of FRS 104. Reconciliations between shareholders' funds and net asset values, calculated after deducting borrowings at par value and fair value, are shown on page 22.

- 11** In the six months to 31 October 2021 the Company issued no ordinary shares (31 October 2020 – 2,375,000 shares with a nominal value of £119,000 at a premium to net asset value, raising net proceeds of £26,799,000). No shares were bought back during the period and no shares were held in treasury at 31 October 2021. At 31 October 2021, the Company had authority to buy back 35,444,433 shares and to allot, or sell from treasury, 23,645,385 shares.
- 12** Transaction costs on purchases amounted to £73,000 (31 October 2020 – £489,000; 30 April 2021 – £714,000) and transaction costs on sales amounted to £69,000 (31 October 2020 – £111,000; 30 April 2021 – £192,000). Total transaction costs were £142,000 (31 October 2020 – £600,000; 30 April 2021 – £906,000).

13 Related Party Transactions

There have been no transactions with related parties during the first six months of the current financial year that have materially affected the financial position or the performance of the Company during that period and there have been no changes in the related party transactions described in the last Annual Report and Financial Statements that could have had such an effect on the Company during that period.

Further Shareholder Information

Company History

Monks was incorporated in 1929 and was one of three trusts founded in the late 1920s by a group of investors headed by Sir Auckland (later Lord) Geddes. The other two trusts were The Friars Investment Trust and The Abbots Investment Trust. The company secretary's office was at 13/14 Austin Friars in the City of London, hence the names.

In 1931, Baillie Gifford & Co took over the management of all three trusts and Monks became a founder member of the Association of Investment Trusts in 1932.

In 1968, under a Scheme of Arrangement, the three trusts were merged with Monks acquiring the ordinary share capital of Friars and Abbots.

Monks is an investment trust. Investment trusts offer investors the following:

- participation in a diversified portfolio of shares;
- constant supervision by experienced professional managers; and
- the Company is free from capital gains tax on capital profits realised within its portfolio although investors are still liable for capital gains tax on profits when selling their investment.

How to Invest

The Company's shares are traded on the London Stock Exchange. They can be bought by placing an order with a stockbroker or by asking a professional adviser to do so. If you are interested in investing directly in Monks, you can do so online. There are a number of companies offering real time online dealing services – find out more by visiting monksinvestmenttrust.co.uk.

Sources of Further Information on the Company

Up-to-date information about Monks can be found on the Company's page of the Managers' website at monksinvestmenttrust.co.uk. You will find full details on Monks, including the latest share price and recent portfolio information and performance figures.

The share price is quoted daily in the Financial Times and can also be found on other financial websites. Company factsheets are also available on the Company's website and are updated monthly. These are available from Baillie Gifford on request.

Client Relations Team Contact Details

You can contact the Baillie Gifford Client Relations Team by telephone (your call may be recorded for training or monitoring purposes), email or post. See contact details in the 'Further Information' box on the back cover.

Share Register Enquiries

Computershare Investor Services PLC maintains the share register on behalf of the Company. In the event of queries regarding shares registered in your own name, please contact the Registrars on 0370 707 1170.

Dividend Reinvestment Plan

Computershare operate a Dividend Reinvestment Plan which can be used to buy additional shares instead of receiving your dividend via cheque or into your bank account. For further information log on to investorcentre.co.uk and follow the instructions or telephone 0370 707 1694.

Risk Warnings

Past performance is not a guide to future performance.

Monks is a listed UK Company. The value of its shares and any income from them can fall as well as rise and investors may not get back the amount invested.

Monks invests in overseas securities. Changes in the rates of exchange may also cause the value of your investment (and any income it may pay) to go down or up.

Market values for securities which have become difficult to trade may not be readily available, and there can be no assurance that any value assigned to such securities will accurately reflect the price Monks might receive upon their sale.

The Company's risk could be increased by its investment in unlisted investments. These assets may be more difficult to buy or sell, so changes in their prices may be greater.

Monks invests in emerging markets where difficulties in dealing, settlement and custody could arise, resulting in a negative impact on the value of your investment.

Monks has borrowed money to make further investments (sometimes known as 'gearing' or 'leverage'). The risk is that when this money is repaid by the Company, the value of the investments may not be enough to cover the borrowing and interest costs, and the Company will make a loss. If the Company's investments fall in value, any invested borrowings will increase the amount of this loss.

Monks can buy back its own shares. The risks from borrowing, referred to above, are increased when the Company buys back its own shares.

Monks can make use of derivatives which may impact on its performance. Currently, the Company does not make use of derivatives.

As the aim of Monks is to achieve capital growth you should not expect a significant, or steady, annual income from the Company.

You should note that tax rates and reliefs may change at any time and their value depends on your circumstances.

Monks is listed on the London Stock Exchange and as such complies with the requirements of the UK Listing Authority. It is not authorised or regulated by the Financial Conduct Authority.

The staff of Baillie Gifford and the Monks Directors may hold shares in Monks and may buy or sell such shares from time to time.

Further details of the risks associated with investing in the Company, including a Key Information Document and how charges are applied, can be found at monksinvestmenttrust.co.uk, or by calling Baillie Gifford on 0800 917 2112. This information has been issued and approved by Baillie Gifford & Co Limited, the Managers and Secretaries, and does not in any way constitute investment advice.

Automatic Exchange of Information

In order to fulfil its obligations under UK tax legislation relating to the automatic exchange of information, the Company is required to collect and report certain information about certain shareholders.

The legislation requires investment trust companies to provide personal information to HMRC on certain investors who purchase shares in investment trusts. Accordingly, the Company will have to provide information annually to the local tax authority on the tax residencies of a number of non-UK based certificated shareholders and corporate entities.

Shareholders, excluding those whose shares are held in CREST, who come on to the share register will be sent a certification form for the purposes of collecting this information.

For further information, please see HMRC's Quick Guide: Automatic Exchange of Information – information for account holders [gov.uk/government/publications/exchange-of-information-account-holders](https://www.gov.uk/government/publications/exchange-of-information-account-holders).

Third Party Data Provider Disclaimer

No third party data provider ('Provider') makes any warranty, express or implied, as to the accuracy, completeness or timeliness of the data contained herewith nor as to the results to be obtained by recipients of the data.

No Provider shall in any way be liable to any recipient of the data for any inaccuracies, errors or omissions in the index data included in this document, regardless of cause, or for any damages (whether direct or indirect) resulting therefrom.

No Provider has any obligation to update, modify or amend the data or to otherwise notify a recipient thereof in the event that any matter stated herein changes or subsequently becomes inaccurate. Without limiting the foregoing, no Provider shall have any liability whatsoever to you, whether in contract (including under an indemnity), in tort (including negligence), under a warranty, under statute or otherwise, in respect of any loss or damage suffered by you as a result of or in connection with any opinions, recommendations, forecasts, judgements, or any other conclusions, or any course of action determined, by you or any third party, whether or not based on the content, information or materials contained herein.

FTSE Index Data

FTSE International Limited ('FTSE') © FTSE 2021. 'FTSE®' is a trade mark of the London Stock Exchange Group companies and is used by FTSE International Limited under licence. All rights in the FTSE indices and/or FTSE ratings vest in FTSE and/or its licensors. Neither FTSE nor its licensors accept any liability for any errors or omissions in the FTSE indices and/or FTSE ratings or underlying data and no party may rely on any FTSE indices, ratings and/or underlying data contained in this communication. No further distribution of FTSE Data is permitted without FTSE's express written consent. FTSE does not promote, sponsor or endorse the content of this communication.

Glossary of Terms and Alternative Performance Measures (APM)

Total Assets

The total value of all assets held less all liabilities (other than liabilities in the form of borrowings).

Shareholders' Funds

Shareholders' Funds is the value of all assets held less all liabilities, with borrowings deducted at book cost.

Net Asset Value (APM)

Net Asset Value (NAV) is the value of all assets held less all liabilities, with borrowings deducted at either par value or fair value as described below. Per share amounts are calculated by dividing the relevant figure by the number of ordinary shares in issue.

Net Asset Value (Borrowings at Par Value) (APM)

Borrowings are valued at nominal par value. A reconciliation from shareholders' funds (borrowings at book value) to net asset value after deducting borrowings at par value is provided below.

| | 31 October 2021 £'000 | 31 October 2021 per share | 30 April 2021 £'000 | 30 April 2021 per share |
|--|-----------------------------|---------------------------------|---------------------------|-------------------------------|
| Shareholders' funds (borrowings at book value) | 3,408,679 | 1,441.6p | 3,204,980 | 1,355.4p |
| Add: book value of borrowings | 139,807 | 59.1p | 139,788 | 59.1p |
| Less: par value of borrowings | (140,000) | (59.2p) | (140,000) | (59.2p) |
| Net asset value (borrowings at par value) | 3,408,486 | 1,441.5p | 3,204,768 | 1,355.3p |

The per share figures above are based on 236,453,859 (30 April 2021 – 236,453,859) ordinary shares of 5p, being the number of ordinary shares in issue at the period end.

Net Asset Value (Borrowings at Fair Value) (APM)

Borrowings are valued at an estimate of market worth. The fair value of the Company's 6% debenture stock 2023 is based on the closing market offer price on the London Stock Exchange. The fair value of the Company's loan notes is calculated using the spread on reference gilts with comparable durations. The fair value of the Company's short term bank borrowings is equivalent to its book value.

A reconciliation from shareholders' funds (borrowings at book value) to net asset value after deducting borrowings at fair value is provided below.

| | 31 October 2021 £'000 | 31 October 2021 per share | 30 April 2021 £'000 | 30 April 2021 per share |
|---|-----------------------------|---------------------------------|---------------------------|-------------------------------|
| Shareholders' funds (borrowings at book value) | 3,408,679 | 1,441.6p | 3,204,980 | 1,355.4p |
| Add: book value of borrowings | 139,807 | 59.1p | 139,788 | 59.1p |
| Less: fair value of borrowings | (132,218) | (55.9p) | (133,524) | (56.4p) |
| Net asset value (borrowings at fair value) | 3,416,268 | 1,444.8p | 3,211,244 | 1,358.1p |

The per share figures above are based on 236,453,859 (30 April 2021 – 236,453,859) ordinary shares of 5p, being the number of ordinary shares in issue at the period end.

Discount/Premium (APM)

As stockmarkets and share prices vary, an investment trust's share price is rarely the same as its NAV. When the share price is lower than the NAV per share it is said to be trading at a discount. The size of the discount is calculated by subtracting the share price from the NAV per share and is usually expressed as a percentage of the NAV per share. If the share price is higher than the NAV per share, this situation is called a premium.

Net Liquid Assets

Net liquid assets comprise current assets less current liabilities (excluding borrowings) and provisions for deferred liabilities.

Active Share (APM)

Active share, a measure of how actively a portfolio is managed, is the percentage of the listed equity portfolio that differs from its comparative index. It is calculated by deducting from 100 the percentage of the portfolio that overlaps with the comparative index. An active share of 100 indicates no overlap with the index and an active share of zero indicates a portfolio that tracks the index.

Total Return (APM)

The total return is the return to shareholders after reinvesting the net dividend on the date that the share price goes ex-dividend, as detailed below.

Net Asset Value Total Return

| | | 31 October 2021 NAV (par) | 31 October 2021 NAV (fair) |
|--------------------------------|--------------------|------------------------------|-------------------------------|
| Closing NAV per share | a | 1,441.5p | 1,444.8p |
| Dividend adjustment factor* | b | 1.0014 | 1.0014 |
| Adjusted closing NAV per share | c = a x b | 1,443.6p | 1,446.8p |
| Opening NAV per share | d | 1,355.9p | 1,358.1p |
| Total return | (c ÷ d) - 1 | 6.5% | 6.5% |

* The dividend adjustment factor is calculated on the assumption that the dividend of 2.00p paid by the Company during the period was reinvested into shares of the Company at the cum income NAV at the ex-dividend date.

Share Price Total Return

| | | 31 October 2021 Share price |
|------------------------------|--------------------|--------------------------------|
| Closing share price | a | 1,382.0p |
| Dividend adjustment factor* | b | 1.0014 |
| Adjusted closing share price | c = a x b | 1,383.9p |
| Opening share price | d | 1,396.0p |
| Total return | (c ÷ d) - 1 | (0.9%) |

* The dividend adjustment factor is calculated on the assumption that the dividend of 2.00p paid by the Company during the period was reinvested into shares of the Company at the share price at the ex-dividend date.

Gearing (APM)

At its simplest, gearing is borrowing. Just like any other public company, an investment trust can borrow money to invest in additional investments for its portfolio. The effect of the borrowing on the shareholders' assets is called 'gearing'. If the Company's assets grow, the shareholders' assets grow proportionately more because the debt remains the same. But if the value of the Company's assets falls, the situation is reversed. Gearing can therefore enhance performance in rising markets but can adversely impact performance in falling markets. The level of gearing can be adjusted through the use of derivatives which affect the sensitivity of the value of the portfolio to changes in the level of markets.

Potential gearing is the Company's borrowings expressed as a percentage of shareholders' funds.

Invested gearing is the Company's borrowings at par less cash and brokers' balances expressed as a percentage of shareholders' funds.

Directors

Chairman:
KS Sternberg

CM Boyle
BJ Richards
Professor Sir Nigel Shadbolt
JJ Tigue

Registered Office

Computershare
Investor Services PLC
Moor House
120 London Wall
London
EC2Y 5ET

Alternative Investment Fund Managers and Secretaries

Baillie Gifford & Co Limited
Calton Square
1 Greenside Row
Edinburgh
EH1 3AN
Tel: 0131 275 2000
bailliegifford.com

Registrar

Computershare
Investor Services PLC
The Pavilions
Bridgwater Road
Bristol
BS99 6ZZ
Tel: 0370 707 1170

Independent Auditor

Ernst & Young LLP
Atria One
144 Morrison Street
Edinburgh
EH3 8EX

Depository

The Bank of New York Mellon
(International) Limited
1 Canada Square
London
E14 5AL

Brokers

Investec Bank plc
30 Gresham Street
London
EC2V 7QP

Company Details

monksinvestmenttrust.co.uk
Incorporated in England and Wales
Company Registration
No. 00236964
ISIN GB0030517261
Sedol 3051726
Ticker MNKS

Legal Entity Identifier:
213800MRI1JTUKG5AF64

Further Information

Client Relations Team
Baillie Gifford & Co
Calton Square
1 Greenside Row
Edinburgh
EH1 3AN
Tel: 0800 917 2112
Email:
trustenquiries@bailliegifford.com